

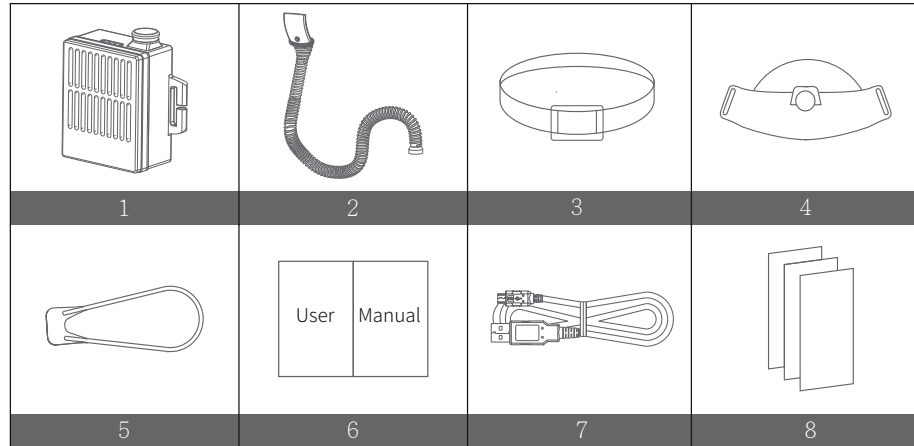
BREATHABLE MASK

USER MANUAL OF MASK HOLDER

Content

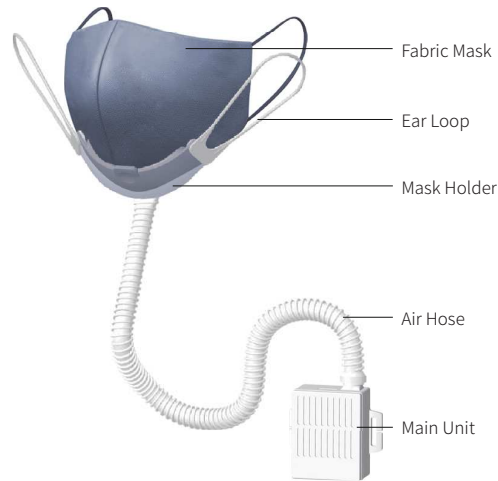
- | | | |
|-----------------------------|--------------------------|----------------|
| 1. Main Unit | 2. Air Hose | 3. Belt |
| 4. Mask Holder | 5. Ear Loop x 2 | 6. User Manual |
| 7. Micro-USB Charging Cable | 8. Melt Blown Filter x 3 | |

Note: A fabric or normal medical mask of user's choice (not included) may be used with this device.



Recommended preparation when the unit is used for the first time

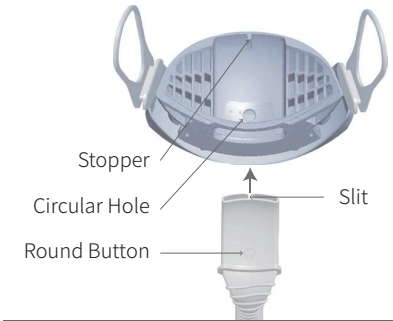
1. Charge the battery for about 3 hours using a 1A rating or higher USB DC adaptor by connecting to the micro-USB connector using the charging cable provided in the box.
2. Leave the assembled unit on for 1 to 2 hours to purge the plastic smell from the unit.



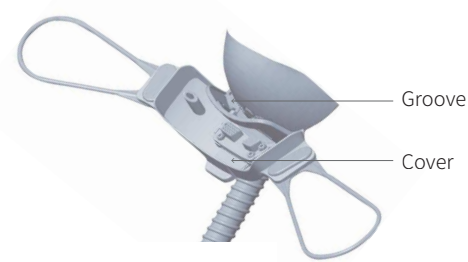
Picture 1: Breathable Mask



Picture 2: Ear Loop Installation



Picture 3: Air Hose Installation



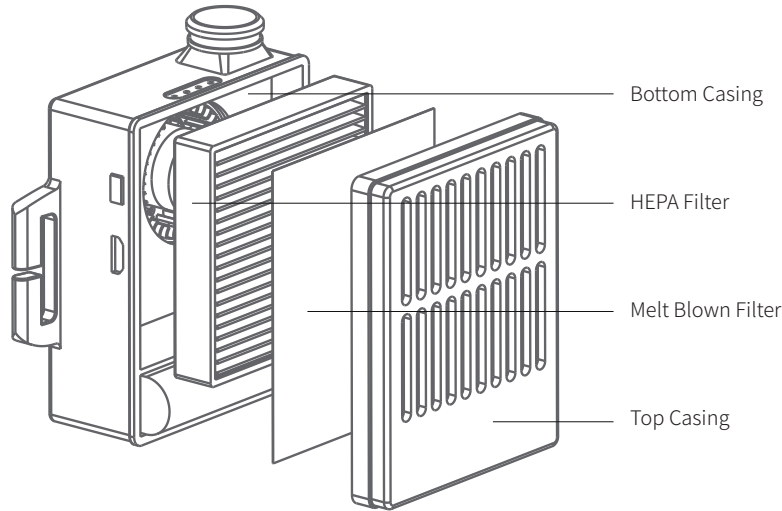
Picture 4: Fabric Mask Installation

Assembly Instruction

1. Insert the flat part of Ear Loop into the hole of the Mask Holder from the front until it locks in (see Picture 2).
2. With the Round Button of the Air Hose facing you, insert the Air Hose into the bottom hole of the Mask Holder until it reaches the top of the Holder. The Stopper at the top of the Holder is inserted into the Slit at the top of the Air Hose. Press the Air Hose at the Round Button to insert it into the Circular Hole on the Mask Holder (see Picture 3).
3. Hold the top of the Cover to open the clip (see Picture 4).
4. Place the bottom of the mask all the way into the Groove of the Holder. Press the clip back to lock the mask to the Holder (see Picture 4).
5. Connect the other end of Air Hose into the air outlet of the Main Unit(see Picture 1).
6. Wear the fabric mask and then hang the Ear Loops to the ears.
7. Press once on the power switch of Main Unit to turn on the power. Then, press the switch to change Air Flow from Low to Middle to High.

Filter Replacement

The HEPA Filter should be replaced after operating for 500 hours. The Melt Blown Filter should be replaced after operating for 150 hours. When the air flow rate drops below 70% with the battery fully charged, check the filters to see which one is clogged and replace.



Please follow the following steps to replace the Filter

1. Open the Top Casing.
2. To replace the filter, remove the old filter and put in the new filter into place. Please observe the correct orientation of the HEPA Filter when the filter is inserted. The bump on the HEPA Filter should be on top.
3. Put back the Top Casing with the Melt Blown Filter into the Bottom Casing.

Product Specification

Item	Description	
Melt Blown Filter	ASTM F2100-19 Level 2 PFE @0.1 micron particle >=98% BFE @3 micron bacteria >=98%	
HEPA Filter	High filtration efficiency filter for 99.5% of 2.5 micron particulate matter	
Filter Operating Life	Melt Blown Filter	150 hours
	E12 HEPA Filter	500 hours
Battery	Li-ion 3.7V 2000mAh	
Air Flow	High	4m ³ /hour
	Middle	3m ³ /hour
	Low	2m ³ /hour
Noise	High	45dB(A)
	Middle	40dB(A)
	Low	36dB(A)
Power Consumption	High	1.3W
	Middle	0.9W
	Low	0.6W
Fan speed selection key sequence	Press once	Power on to low air flow
	Press once	Middle air flow
	Press once	High air flow
	Press once	Power off
Charging	Micro USB 5V	
Battery Indicator	4-level battery indicator	
Size	73mm*58mm*34mm	

Specifications subject to revisions and improvements without prior notification

Trouble Shooting

Description	Cause	Action
No air or small air flow	HEPA Filter or Melt Blown Filter clogged	Replace HEPA Filter or Melt Blown Filter
Motor fan not turning	Battery discharged, or control PCBA failed	Recharge battery, or repair unit
Cannot install the HEPA Filter	The orientation of the HEPA was reversed	The bump on the HEPA Filter should be on top
Broken or leaky Air Hose	Air Hose aged, cracked	Replace Air Hose